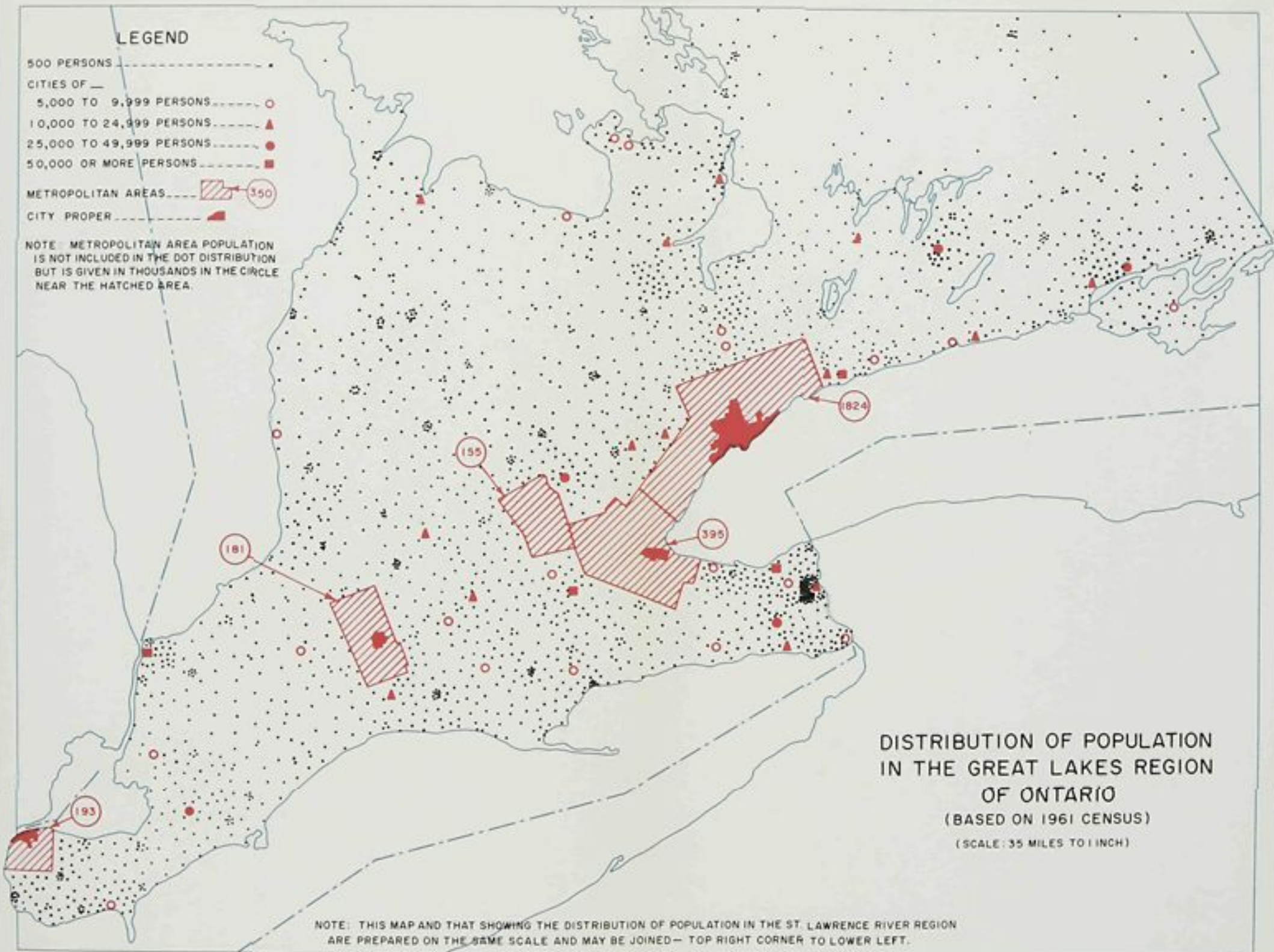


# LEGEND

- 500 PERSONS ----- ●
- CITIES OF —
- 5,000 TO 9,999 PERSONS ----- ○
- 10,000 TO 24,999 PERSONS ----- ▲
- 25,000 TO 49,999 PERSONS ----- ●
- 50,000 OR MORE PERSONS ----- ■
- METROPOLITAN AREAS ----- [Hatched Area] (350)
- CITY PROPER ----- [Red Square]

NOTE: METROPOLITAN AREA POPULATION IS NOT INCLUDED IN THE DOT DISTRIBUTION BUT IS GIVEN IN THOUSANDS IN THE CIRCLE NEAR THE HATCHED AREA.



## DISTRIBUTION OF POPULATION IN THE GREAT LAKES REGION OF ONTARIO

(BASED ON 1961 CENSUS)

(SCALE: 35 MILES TO 1 INCH)

NOTE: THIS MAP AND THAT SHOWING THE DISTRIBUTION OF POPULATION IN THE ST. LAWRENCE RIVER REGION ARE PREPARED ON THE SAME SCALE AND MAY BE JOINED— TOP RIGHT CORNER TO LOWER LEFT.